

Internet of things

Computer Literacy

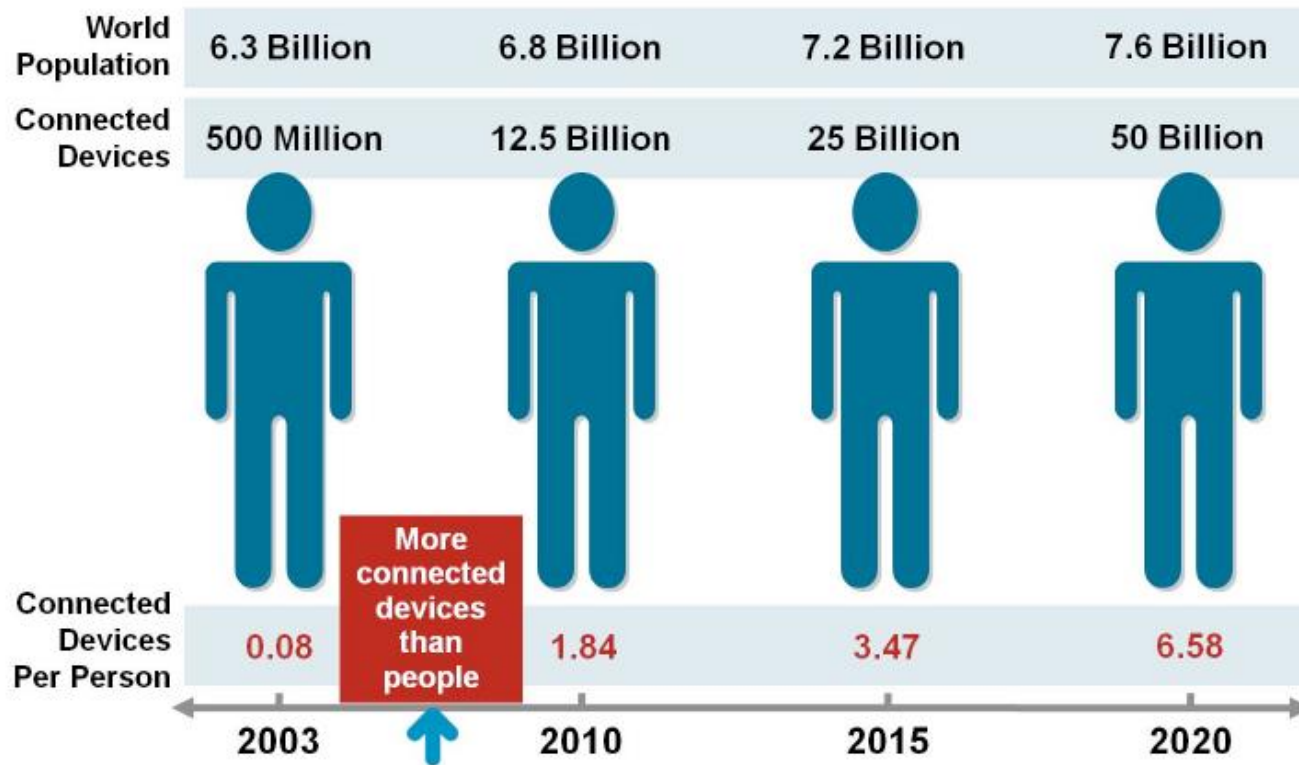
Cisco Commercial



Birth of IOT



Figure 1. The Internet of Things Was “Born” Between 2008 and 2009



Source: Cisco IBSG, April 2011

Internet of Things



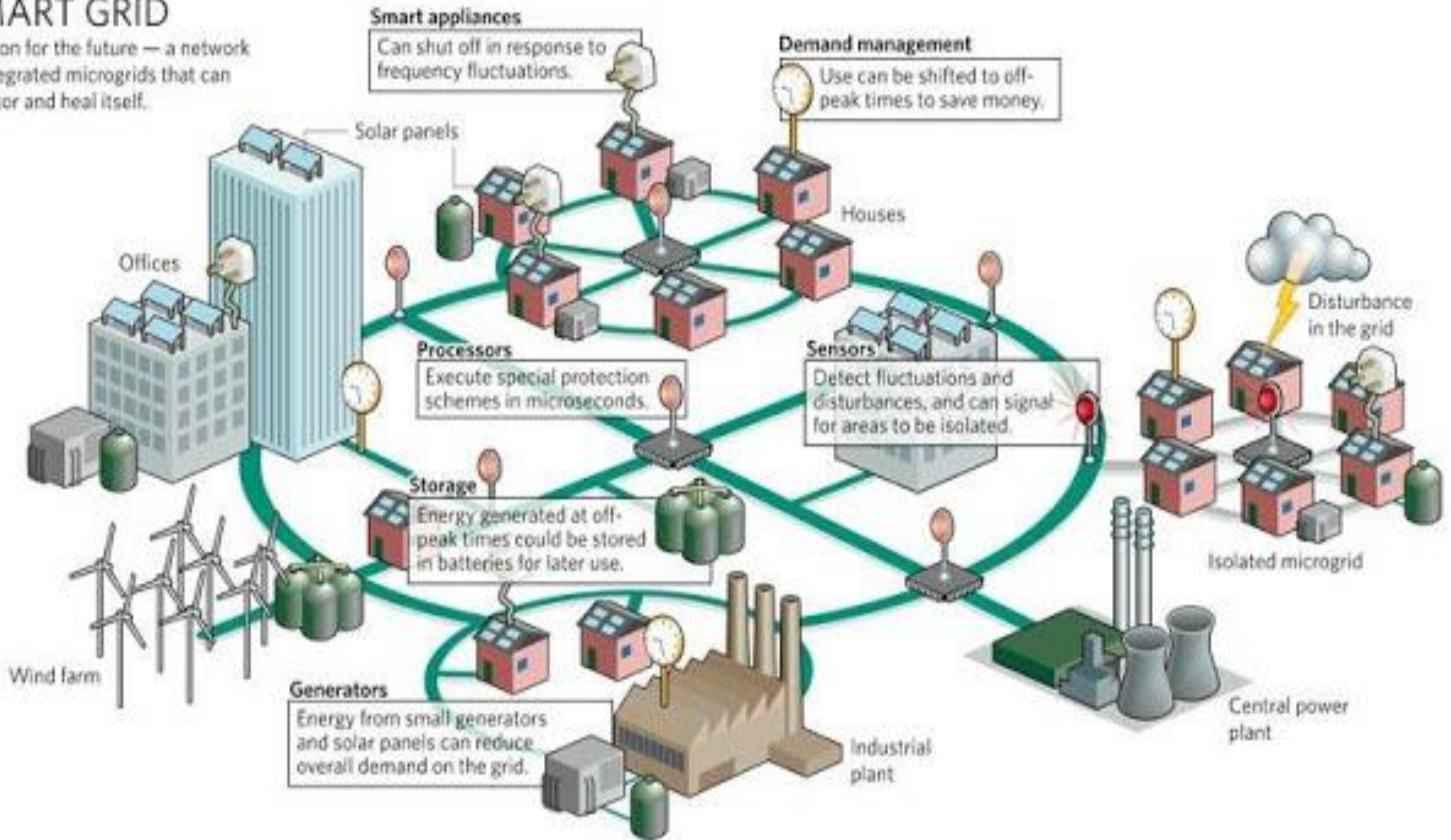
- Beyond human communication
- Communication between devices
 - People-to-people
 - People-to-things
 - Things-to-things

Smart Grid



SMART GRID

A vision for the future — a network of integrated microgrids that can monitor and heal itself.



Smart Home



Figure 3 – Smart home for smart people



Source: ITU adapted from Line9

Applications



- **Environmental or habitat monitoring**
 - Scientific, ecological applications
 - Seismic detection
- **Surveillance and tracking**
 - Intrusion detection
 - Pursuer-evader
- **Smart environments**
 - Agriculture
 - Manufacturing / Industry
 - Smart Grid
- **Medical applications**
 - Hospital or clinic
 - Retirement / Assisted Living
- Many others...

IOT – network of smart objects



- IoT is a network of smart objects.
- A **smart object** is a tiny, low cost computer that may contain:
 - A sensor which may contain physical data (e.g., temperature, vibration, pollution, camera, microphone, GPS)
 - An actuator capable of performing a task (e.g., change traffic lights, rotate a mirror)
 - A communication device to receive instructions, send data, or route information
- This device is embedded into objects to make them “smart”.
 - Thermometers, car engines, light switches, gas meters

Smart Object Characteristics



- Small in size
 - Limited CPU power
 - Limited Memory
 - Limited Bandwidth
 - May operate in harsh environments
-
- Power consumption is critical – battery may need to last for a few years

Wireless Sensor Networks



- A distributed connection of nodes that coordinate to perform a common task
- Nodes can sensory information, perform some processing, and communicate with other nodes
- Enabling technologies (designed for nodes with limitations)
 - Bluetooth
 - Zigbee
 - RFID

Scenario: Shopping



- Entering store, scanners will identify tags on our clothes
- Goods will introduce themselves
- Exiting store, scanners detect merchandise that you have and automatically charge your credit card

